

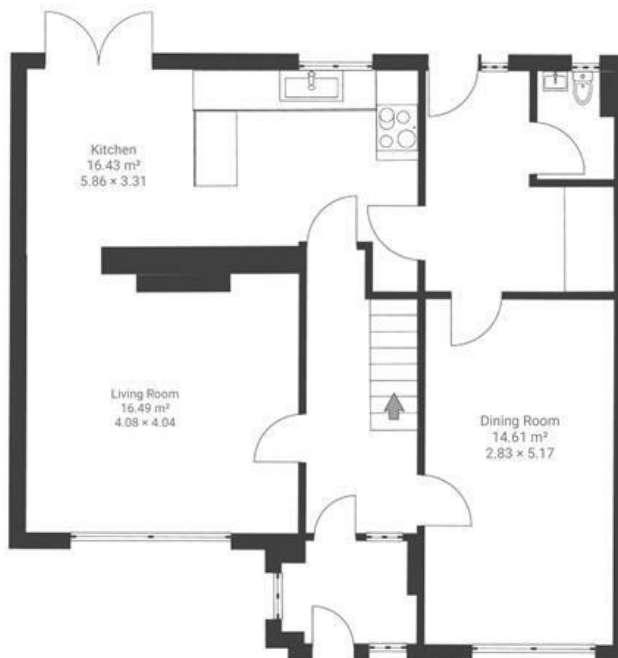
South Hayes

EASTVILLE

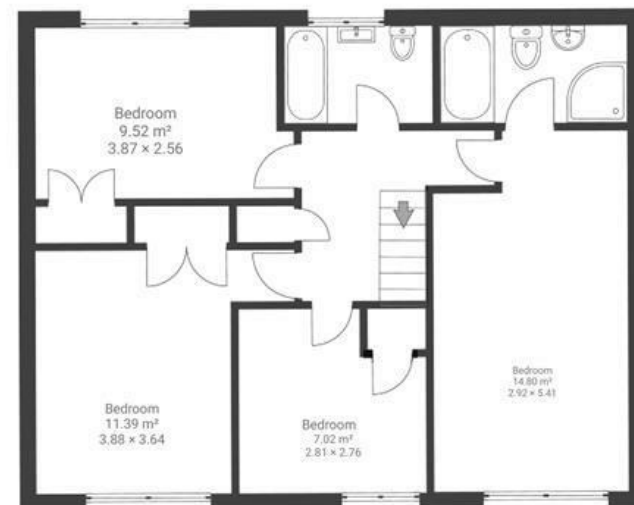
APPROXIMATE FLOOR AREA
139.7 SQM / 1503 SQFT



GROUND FLOOR



FIRST FLOOR



Boardwalk

South Hayes

EASTVILLE, BRISTOL

£

£475,000



Bristol, BS5

6UR

z z z

4 Bedrooms



2 Bathrooms

"What's been great about this home is the access to masses of green space; we back directly onto Purdown, which in turn leads through to Snuff Mills and the Frome Valley, Oldbury Hall Estate and then Frenchay! Working from home it's sanity-saving to have direct access to walks and runs. The sheer number of rooms and office spaces have made it easy for both of us to work undisturbed and have space for teens to hang out. It's an established, really friendly neighbourhood where people look out for each other."

